

**BINGWI NEYAASHI
ANISHINAABEK
(Sand Point First Nation)**

**DISTRICT BIOMASS PROJECT
NAFA CONFERENCE
THUNDER BAY, ON**

October 9th, 2024



BNA HISTORY

- The people of Bingwi Neyaashi Anishinaabek - formerly known as Sand Point First Nation - have been occupying the southeast shores of Lake Nipigon since time immemorial
- Once a thriving community, the people of Sand Point worked as commercial fishermen, trappers and fur traders
- Flooding of Lake Nipigon due to a series of dams and diversions throughout the watershed, which destroyed the community
- Destruction of the community and displacement of the membership by the Province to make way for the creation of the Lake Nipigon Provincial Park
- BNA reclaimed its community lands in 2010.
- My job is to re-build the community



BNA TODAY



BNA COMMENCES DEVELOPMENT

- 2008-2020: Series of Developments
- 2009: Papasay - BNA's Ec Dev Corp, owned 100% by BNA, is formed
- 2010-12: Surveying and clearing of Lot A of the BNA Industrial Park
- 2012: BNA Capital Plan is developed
- 2012: BNA and Canada sign the Framework Agreement on First Nation Land Management. In March 2014, the BNA membership ratified its Land Code, removing BNA from 25% of the Indian Act
- 2018: Housing construction commences at BNA on 2 duplexes, followed by 3 individual homes
- 2019: First member moves to the land

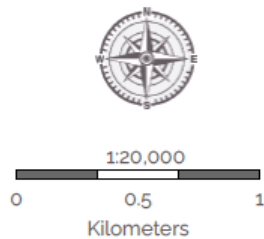
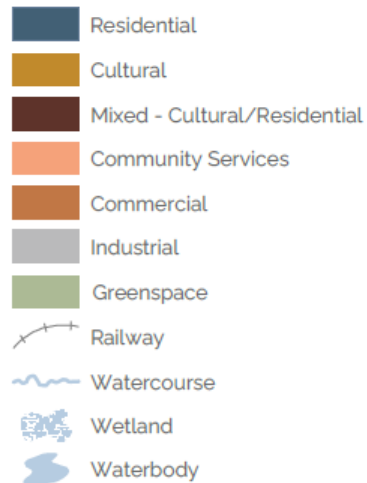


BNA LAND USE PLAN

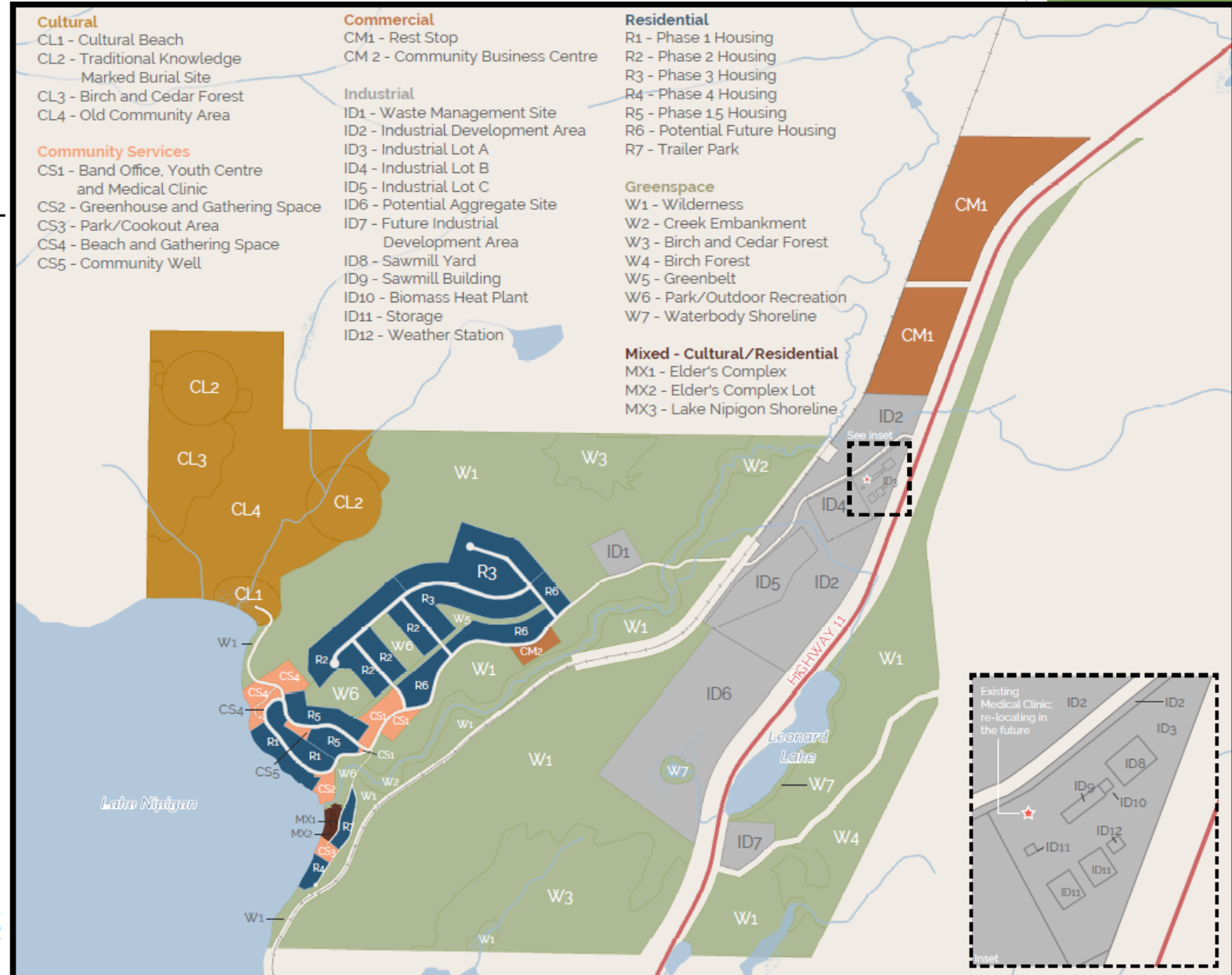


**Bingwi Neyaashi
Anishinaabek**

Land Use Zones



Bingwi Neyaashi Anishinaabek
This drawing, map or plan is for presentation purposes only and may
contain cartographic errors or omissions. This product is not to be used as a
source for navigation. CES shall not be liable in any way for the use of, or
reliance upon, this map or any information on this map.
Date: 2022-03-24
NAD 1983 UTM Zone 16N



PAPASAY MANAGEMENT CORPORATION

- ▶ Created in 2009
- ▶ Meant to separate business from politics
- ▶ Separate Board of Directors appointed by Council
- ▶ Papasay Value-Added Wood Products LP operates the BNA Sawmill
- ▶ Papasay Management LP partners with companies



COMMUNITY ENERGY CHAMPION

BNA receives funding from IESO for the salary costs of the Community Energy Champion (BNA Energy Coordinator Aysha McNally). Aysha leads BNA's Clean Energy developments.



**ENERGY
CHAMPIONS!**

ENERGY CHAMPION TRAINING

SAWMILL AND BIOMASS DEVELOPMENTS

BNA: LOCATED IN THE HEART OF THE LN FOREST

BNA is located in the heart of the Lake Nipigon Forest. The Forestry Unit is over 1,000,000 hectares in size, and the 4 First Nations located on the Forest - BNA, RRIB, BZA, AZA - each have a 25% share in Lake Nipigon Forest Management Inc. (LNFMI), and have the Sustainable Forestry Licence (SFL) for the Lake Nipigon Forest. We operate as a collective, and share in the benefits of the Forestry operations that take place in our collective traditional territories.



THE PAPASAY SAWMILL

- The vision of the Sawmill is to be an on-reserve anchor project, providing jobs to members and lumber for their homes
- We commenced operations in 2017 with 3 employees; Art Gladu is Papasay's Sawmill Manager
- Currently producing rough-sawn, air-dried lumber
- There is a Business Plan in place and we are currently expanding the operation to include the production of value-added lumber and products
- This is being done with the support of Federal partners FedNor and NRCan
- But when we started: No heat!!!



HEATING THE SAWMILL: BNA SMALL BIOMASS PROJECT



- NRCan-Supported Project
- Poured 28x30ft concrete pad
- Sawmill Insulated
- 20ft Seacan insulated
- The Froling T4 150kw Boiler uses high-quality wood chips from the Sawmill's wood residue
- Worked with Biothermic



HEATING THE SAWMILL CONT.



- Fuel is by-product from Papasay Sawmill operation
- Pezzolato Chipper for slabs
- Wood Chip Storage
- Additional Equipment purchased for future biomass developments



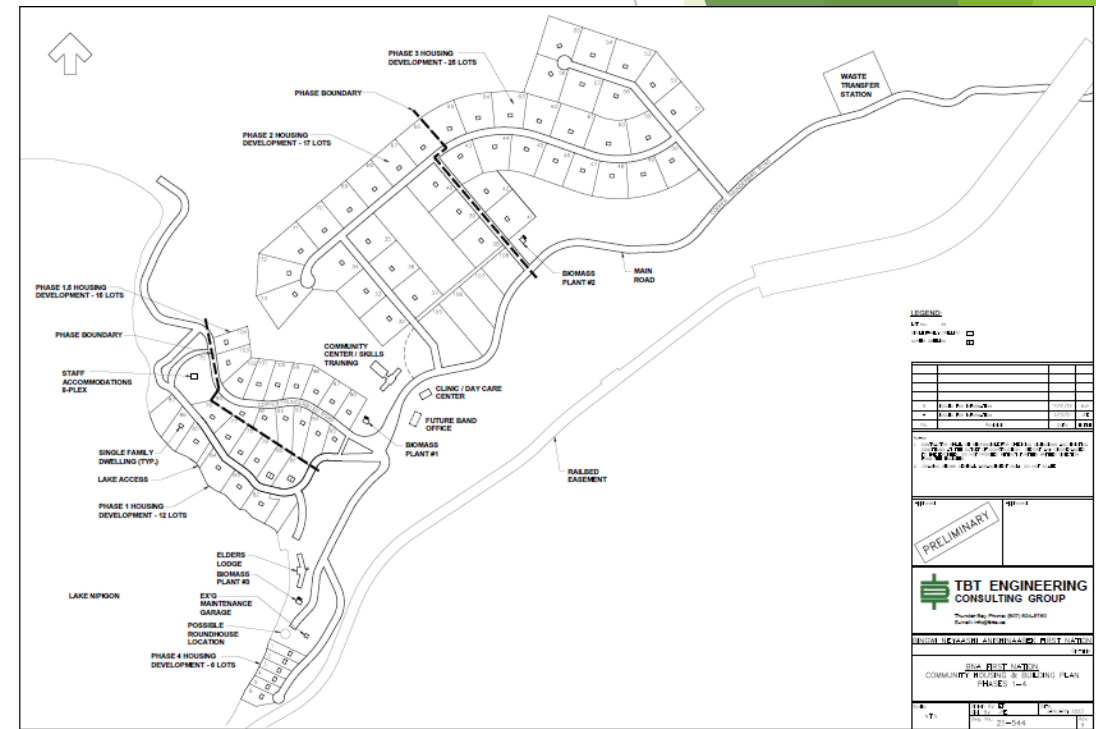
BNA DISTRICT HEATING

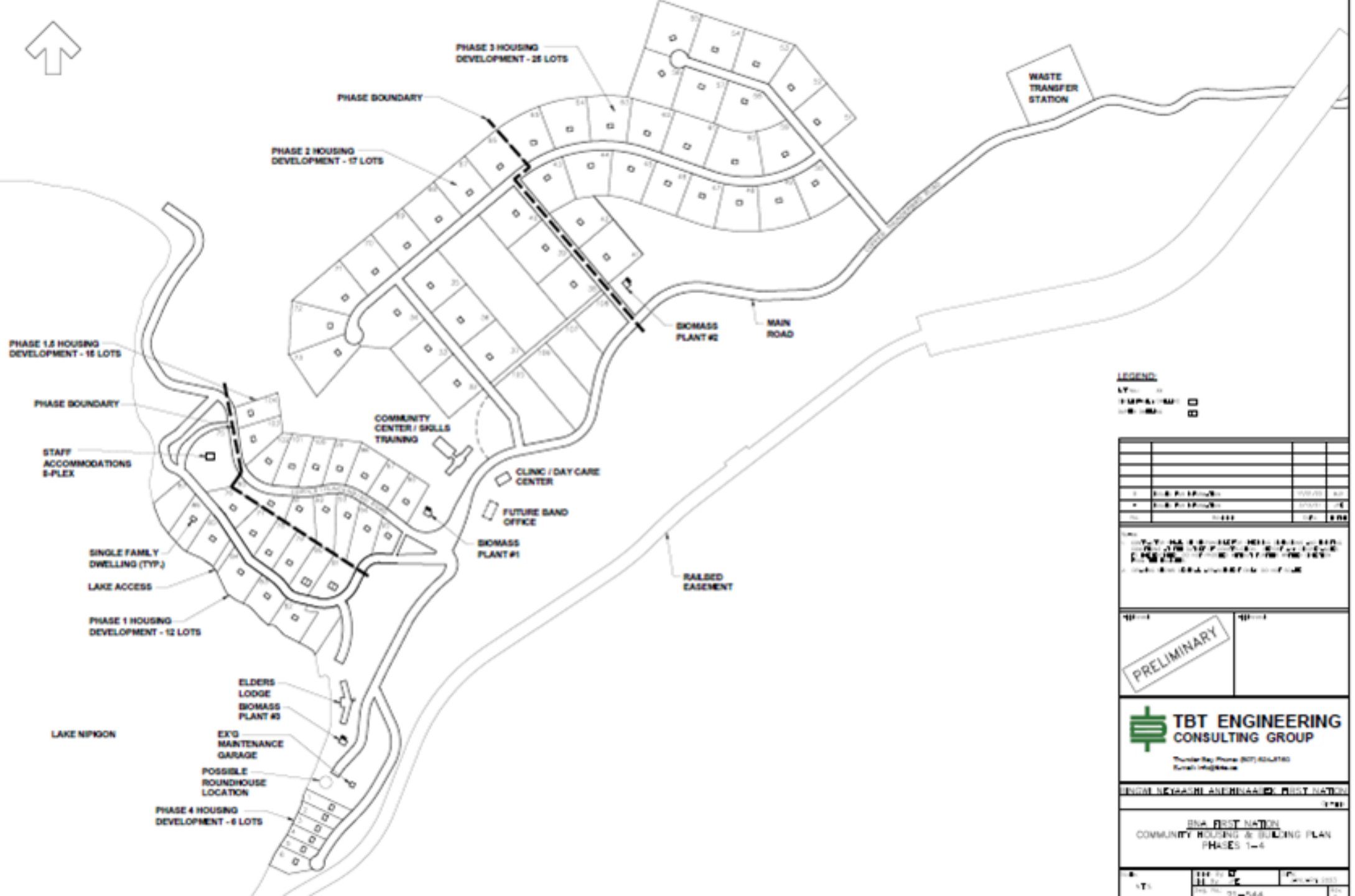
- BNA envisions a clean, green community run on renewable energy, utilizing its wood residue from its economic driver - the Sawmill - to heat its homes and buildings



BN A DISTRICT HEATING

- BNA is in the process of building homes for the return of our members - 25 Homes, including 2 duplexes and 2 fourplexes, have been constructed. We continue to build yearly (3 more homes just approved by CMHC).
- Upcoming: BNA Government Office, Roundhouse, Elders' Complex, Community Centre, Emergency Services.
- We now have a “critical mass” of homes and infrastructure at BNA which can hook into a **District Heating System**
- Regular supply of fuel from Sawmill wood residue on-reserve
- Chipping at Sawmill, delivered to small plants within the community





LEGEND

1" = 100'	
1" = 100'	
1" = 100'	

1	1" = 100'	1" = 100'	1" = 100'
2	1" = 100'	1" = 100'	1" = 100'
3	1" = 100'	1" = 100'	1" = 100'
4	1" = 100'	1" = 100'	1" = 100'
5	1" = 100'	1" = 100'	1" = 100'
6	1" = 100'	1" = 100'	1" = 100'
7	1" = 100'	1" = 100'	1" = 100'
8	1" = 100'	1" = 100'	1" = 100'
9	1" = 100'	1" = 100'	1" = 100'
10	1" = 100'	1" = 100'	1" = 100'
11	1" = 100'	1" = 100'	1" = 100'
12	1" = 100'	1" = 100'	1" = 100'
13	1" = 100'	1" = 100'	1" = 100'
14	1" = 100'	1" = 100'	1" = 100'
15	1" = 100'	1" = 100'	1" = 100'
16	1" = 100'	1" = 100'	1" = 100'
17	1" = 100'	1" = 100'	1" = 100'
18	1" = 100'	1" = 100'	1" = 100'
19	1" = 100'	1" = 100'	1" = 100'
20	1" = 100'	1" = 100'	1" = 100'
21	1" = 100'	1" = 100'	1" = 100'
22	1" = 100'	1" = 100'	1" = 100'
23	1" = 100'	1" = 100'	1" = 100'
24	1" = 100'	1" = 100'	1" = 100'
25	1" = 100'	1" = 100'	1" = 100'
26	1" = 100'	1" = 100'	1" = 100'
27	1" = 100'	1" = 100'	1" = 100'
28	1" = 100'	1" = 100'	1" = 100'
29	1" = 100'	1" = 100'	1" = 100'
30	1" = 100'	1" = 100'	1" = 100'
31	1" = 100'	1" = 100'	1" = 100'
32	1" = 100'	1" = 100'	1" = 100'
33	1" = 100'	1" = 100'	1" = 100'
34	1" = 100'	1" = 100'	1" = 100'
35	1" = 100'	1" = 100'	1" = 100'
36	1" = 100'	1" = 100'	1" = 100'
37	1" = 100'	1" = 100'	1" = 100'
38	1" = 100'	1" = 100'	1" = 100'
39	1" = 100'	1" = 100'	1" = 100'
40	1" = 100'	1" = 100'	1" = 100'
41	1" = 100'	1" = 100'	1" = 100'
42	1" = 100'	1" = 100'	1" = 100'
43	1" = 100'	1" = 100'	1" = 100'
44	1" = 100'	1" = 100'	1" = 100'
45	1" = 100'	1" = 100'	1" = 100'
46	1" = 100'	1" = 100'	1" = 100'
47	1" = 100'	1" = 100'	1" = 100'
48	1" = 100'	1" = 100'	1" = 100'
49	1" = 100'	1" = 100'	1" = 100'
50	1" = 100'	1" = 100'	1" = 100'
51	1" = 100'	1" = 100'	1" = 100'
52	1" = 100'	1" = 100'	1" = 100'
53	1" = 100'	1" = 100'	1" = 100'
54	1" = 100'	1" = 100'	1" = 100'
55	1" = 100'	1" = 100'	1" = 100'
56	1" = 100'	1" = 100'	1" = 100'
57	1" = 100'	1" = 100'	1" = 100'
58	1" = 100'	1" = 100'	1" = 100'
59	1" = 100'	1" = 100'	1" = 100'
60	1" = 100'	1" = 100'	1" = 100'
61	1" = 100'	1" = 100'	1" = 100'
62	1" = 100'	1" = 100'	1" = 100'
63	1" = 100'	1" = 100'	1" = 100'
64	1" = 100'	1" = 100'	1" = 100'
65	1" = 100'	1" = 100'	1" = 100'
66	1" = 100'	1" = 100'	1" = 100'
67	1" = 100'	1" = 100'	1" = 100'
68	1" = 100'	1" = 100'	1" = 100'
69	1" = 100'	1" = 100'	1" = 100'
70	1" = 100'	1" = 100'	1" = 100'
71	1" = 100'	1" = 100'	1" = 100'
72	1" = 100'	1" = 100'	1" = 100'
73	1" = 100'	1" = 100'	1" = 100'
74	1" = 100'	1" = 100'	1" = 100'
75	1" = 100'	1" = 100'	1" = 100'
76	1" = 100'	1" = 100'	1" = 100'
77	1" = 100'	1" = 100'	1" = 100'
78	1" = 100'	1" = 100'	1" = 100'
79	1" = 100'	1" = 100'	1" = 100'
80	1" = 100'	1" = 100'	1" = 100'
81	1" = 100'	1" = 100'	1" = 100'
82	1" = 100'	1" = 100'	1" = 100'
83	1" = 100'	1" = 100'	1" = 100'
84	1" = 100'	1" = 100'	1" = 100'
85	1" = 100'	1" = 100'	1" = 100'
86	1" = 100'	1" = 100'	1" = 100'
87	1" = 100'	1" = 100'	1" = 100'
88	1" = 100'	1" = 100'	1" = 100'
89	1" = 100'	1" = 100'	1" = 100'
90	1" = 100'	1" = 100'	1" = 100'
91	1" = 100'	1" = 100'	1" = 100'
92	1" = 100'	1" = 100'	1" = 100'
93	1" = 100'	1" = 100'	1" = 100'
94	1" = 100'	1" = 100'	1" = 100'
95	1" = 100'	1" = 100'	1" = 100'
96	1" = 100'	1" = 100'	1" = 100'
97	1" = 100'	1" = 100'	1" = 100'
98	1" = 100'	1" = 100'	1" = 100'
99	1" = 100'	1" = 100'	1" = 100'
100	1" = 100'	1" = 100'	1" = 100'

1. The plan shows the layout of the proposed housing development, including the location of the housing units, the community center, the clinic, the day care center, the future band office, the biomass plant, the elders lodge, the maintenance garage, the possible roundhouse location, and the lake access.

PRELIMINARY

TBT ENGINEERING CONSULTING GROUP
Thunder Bay Phone: (807) 464-1110
Email: info@tbt.ca

BNA FIRST NATION
COMMUNITY HOUSING & BUILDING PLAN
PHASES 1-4

1" = 100'

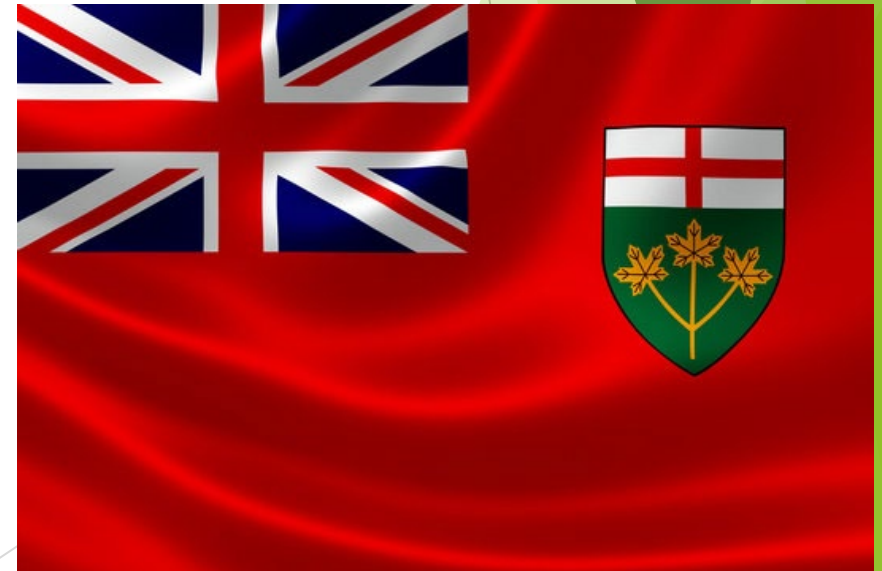
BNA DISTRICT HEATING

- BNA was successful with the Province's Indigenous Biomass program in 2023/24
- Completed clearing of the site for Biomass Plant #1 (Tom Rentz Contracting)
- Completed Geotech study on the site (TBT Engineering)
- Completed “Ash Management Plan”, as well as additional Marketing Plan for Sawmill Wood Slabs (NCS)
- Completed Plan for Permitting (TBT Engineering)



CURRENT AND POTENTIAL FUNDERS

- ▶ Natural Resources Canada (NRCan)
- ▶ FEDNOR
- ▶ Indigenous Services Canada (ISC)
- ▶ Independent Electricity Systems Operator (IESO)
- ▶ Northern Ontario Heritage Funding Corporation (NOHFC)
- ▶ Forest Biomass Program (MNR)
- ▶ Indigenous Leadership Fund (ECCC)
- ▶ Indigenous Clean Energy (ICE) Project Accelerator Program



BNB DISTRICT HEATING: NEXT STEPS



- Business Planning, Engineering/Design and Geotechnical Work for Biomass District Heating System is Complete
- Applying to Federal and Provincial Funders for Support
- Converting Homes with Support from IESO
- Conducting Wood Supply Analysis with the support from NRCan
- Drying wood slabs in Sawmill Yard to be Biomass-Ready - already occurring with our Sawmill Biomass unit

NEXT STEPS CONTINUED

- ▶ Hire Project Managers to assist with Project
- ▶ Tender out Engineering Package
 - ▶ Order Equipment
- ▶ Complete Civil Work and Pour Concrete Slab
- ▶ Retrofit New and Existing Homes from Electrical to Biomass compatible
- ▶ Construction of New Biomass Plant, trenches and piping
- ▶ Complete Project - Help Others to Replicate our Success
- ▶ Time is of the essence! - federal and provincial elections

MIIGWETCH!

Jordan Hatton, Director of
Economic Development

Bingwi Neyaashi
Anishinaabek

(807) 472-9619

jhatton@bnafn.ca

